

SURVEYORS

測量師時代
Times

Vol.21 • No.3 • March 2012

Together We Build a
Better Society
共建美好社會



HKIS 2011-2012 General Council

香港測量師學會2011-2012年度理事會

Office Bearers 執行理事

| | |
|-----------------------------|--------------------|
| President 會長 | Serena Lau 劉詩韻測量師 |
| Senior Vice President 高級副會長 | Stephen Lai 賴旭輝測量師 |
| Vice President 副會長 | Simon Kwok 郭志和測量師 |
| Honorary Secretary 義務秘書 | Robin Leung 梁志添測量師 |
| Honorary Treasurer 義務司庫 | Gary Yeung 楊文佳測量師 |

Council Members 理事

Building Surveying Division 建築測量組

| | |
|------------------------------|--------------------|
| Chairman 主席 | Vincent Ho 何鉅業測量師 |
| Vice Chairman 副主席 | Andrew Kung 龔瑞麟測量師 |
| Immediate Past Chairman 上任主席 | Kenneth Yun 甄英傑測量師 |

General Practice Division 產業測量組

| | |
|-------------------------|----------------------|
| Chairman 主席 | Francis Ng 吳恒廣測量師 |
| Vice Chairman 副主席 | Chiu Kam Kuen 趙錦權測量師 |
| Honorary Treasurer 義務司庫 | Edward Au 區成禧測量師 |

Land Surveying Division 土地測量組

| | |
|-------------------|----------------------|
| Chairman 主席 | Koo Tak Ming 古德明測量師 |
| Vice Chairman 副主席 | Lesly Lam 林力山測量師 |
| Vice Chairman 副主席 | Chan Yue Chun 陳宇俊測量師 |

Planning & Development Division 規劃及發展組

| | |
|-------------|---------------------|
| Chairman 主席 | Raymond Chan 陳旭明測量師 |
|-------------|---------------------|

Property & Facility Management Division 物業設施管理組

| | |
|-------------------------|---------------------|
| Chairman 主席 | Dick Kwok 郭岳忠測量師 |
| Vice Chairman 副主席 | Edmond Cheng 鄭錦華測量師 |
| Honorary Treasurer 義務司庫 | Eddie Hui 許智文測量師 |

Quantity Surveying Division 工料測量組

| | |
|-------------------------|------------------|
| Chairman 主席 | Thomas Ho 何國鈞測量師 |
| Vice Chairman 副主席 | Keith Yim 嚴少忠測量師 |
| Honorary Secretary 義務秘書 | Paul Wong 黃國良測量師 |

Young Surveyors Group 青年組

| | |
|-------------------|-----------------------|
| Chairman 主席 | Kenny Chan 陳志雄測量師 |
| Vice Chairman 副主席 | Michelle Chung 鍾敏慧測量師 |

Ex-Officio Members 當然成員

| | |
|---|------------------------------|
| Immediate Past President 上任會長 | Wong Bay 黃比測量師 |
| Chairman, Board of Education 教育委員會主席 | Thomas Tang 鄧超文測量師 |
| Chairman, Board of Membership 會籍委員會主席 | Prof Barnabas Chung 鍾鴻鈞教授測量師 |
| Chairman, Board of Professional Development 專業發展委員會主席 | Ricky Chan 陳德賢測量師 |

SURVEYORS TIMES Editorial Board

測量師時代編輯委員會

| | |
|---|------------------------------|
| Honorary Editor 義務編輯 | Daniel Ho 何志榮測量師 |
| Building Surveying Division 建築測量組 | Jessie Yue 虞偉珠測量師 |
| General Practice Division 產業測量組 | Edward Au 區成禧測量師 |
| Land Surveying Division 土地測量組 | Lesly Lam 林力山測量師 |
| Planning & Development Division 規劃及發展組 | Cyrus Mok 莫躍孺測量師 |
| Property & Facility Management Division 物業設施管理組 | Professor Eddie Hui 許智文教授測量師 |
| Quantity Surveying Division 工料測量組 | Rowson Lee 李健航測量師 |
| | Tzena Wong 黃浣菁測量師 |
| Young Surveyors Group 青年組 | Angela So 蘇穎筠測量師 |

The SURVEYORS TIMES Editorial Board welcomes views, opinion and article submissions. Articles submitted can be in either the English or the Chinese language and, if published, will appear only in the language submitted. The publication of materials will be at the discretion of the Editorial Board. Please email steditor@hkis.org.hk or fax (852) 2868 4612 or by post to: The SURVEYORS TIMES Editorial Board, Suite 801, Jardine House, 1 Connaught Place, Central, Hong Kong. SURVEYORS TIMES is the Institute's official monthly newsletter circulated free of charge to all members of the Hong Kong Institute of Surveyors. Circulation: 8,000 copies.

No part of this publication may be reproduced or transmitted in any form or by any means without the written permission of HKIS. The contents of this publication do not necessarily reflect the views or opinion of HKIS or its members and no liability is accepted in relation thereto. Advertisements appearing imply neither endorsement nor recommendation by HKIS. For enquiries, please call 2526 3679.

「測量師時代編輯委員會」歡迎會員以任何形式提供意見及稿件，來稿可用英文或中文，一旦選用，文章將以原文語言刊出。所有文章出版權由上述委員會決定。來函可電郵 steditor@hkis.org.hk 或傳真 (852) 2868 4612或郵寄香港中環康樂廣場1號怡和大廈801室「測量師時代編輯委員會」收。「測量師時代」月刊免費送贈香港測量師學會會員，每期發行量8,000份。

除非已獲得香港測量師學會書面同意，本刊內容不得翻印或以任何形式複製。文章內容、立場及意見並不代表香港測量師學會。廣告純屬商業活動，一律不包含香港測量師學會任何認可。如有查詢，請電 2526 3679。

All rights reserved©2012
The Hong Kong Institute of Surveyors

版權所有，翻印必究
香港測量師學會

3 President's Message 會長的話

5 HKIS News 學會簡訊

- 5 Years Plus Caring Organisation Logo
- Newly-Elected Chief Executive of the HKSAR
- Congratulations to Candidates who were Elected as HKIS Members on 22 March 2012
- Invitation for Recommendation of Alternative Office Premises
- Calendar of Events
- Council Members Reaching Out

8 Divisional News & Activities 組別簡訊

14 HKIS CPD / PQSL Events

36 Education 增值空間

- Sustainable Development of Computer Equipment
Visit to Computer Recycle Workshop
- How to become a World City: Lesson from London

37 Sports and Recreation 運動娛閒

Call for articles on members' corner

Do you have something to share with our members? The Editorial Board would welcome contributions from members for publication in Surveyors Times.

Articles can be in English or Chinese and should be submitted in MS Word format and include the title of the paper, author's name, division and his/ her HKIS designation. For articles in Chinese, a summary in English will be required. Submissions must not have been published previously. Publication of article will be at the discretion of the Editorial Board whose decision shall be final. Please email articles to steditor@hkis.org.hk.

Surveying and Built Environment – Call for papers

Surveying and Built Environment is an international peer reviewed journal that aims to develop, elucidate, and explore the knowledge of surveying and the built environment; to keep practitioners and researchers informed on current issues and best practices, as well as serving as a platform for the exchange of ideas, knowledge, and opinions among surveyors and related disciplines.

Surveying and Built Environment publishes original contributions in English on all aspects of surveying and surveying related disciplines. Original articles are considered for publication on the condition that they have not been published, accepted or submitted for publication elsewhere. The Editor reserves the right to edit manuscripts to fit articles within the space available and to ensure conciseness, clarity and stylistic consistency. All articles submitted for publication are subject to a double-blind review procedure.

For Submission Guidelines or enquiries, please contact the Editor of the Surveying and Built Environment Editorial Board at Suite 801, 8/F., Jardine House, 1 Connaught Place, Central, Hong Kong; email: editor@hkis.org.hk; telephone: +852 2526 3679; or fax +852 2868 4612.



Serena Lau

This year, we shall witness new terms of administration in many regions such as Hong Kong, mainland China and some western countries. Such changes may pose to our economy as well as society a lot of opportunities and challenges. By the time I wrote this message, the Chief Executive election has just come to an end. It is our pleasure to have our member as well as our Past President Mr CY Leung to be elected as the Chief Executive of the HKSAR. Being one of the major professional institutes in the construction and real estate industry and a caring organization in the society, we are particularly concerned about the policies relating to the built environment of Hong Kong. The Institute will continue to contribute in public and social affairs of Hong Kong through providing impartial and professional advice to the new Government.

We have observed that the implementation of 10 infrastructure projects has driven the boom of construction works, and building works on public and private housing have rebounded. Since last year, the residential property market has been slowed down after imposition of the Special Stamp Duty and tightening the control in bank financing. To cope with these changes and the challenges, we consider continuous professional development is very important to keep up the competence and competitiveness of our members. I would like to invite members to express your CPD needs actively to our Board of Professional Development or Divisional Councils so as to help you as well as other members to sail through the challenges ahead.

We are now having around 600 members practicing in mainland China. Considering the growing numbers of members in the mainland, the Institute has formed the Mainland Committee chaired by our fellow member Mr Albert Cheung and three local forums in Beijing, Guangzhou and Shanghai convened by Mr Simon Tam, Mr Edwin Tsang and Ms Iris Lee respectively to offer support in connection to the profession to our members in the mainland. The Mainland Committee and the forums are established to arrange social events, identify suitable CPD events and keep contacts with local counterparts. To cover members who do not station close to these three forums, the Mainland Committee is delegated to identify opportunities to visit selected cities/ areas to exchange latest news about the market as well as the Institute. Please do not hesitate to contact your forum convenors as well as the chairman of the Mainland Committee and offer your opinions and suggestions on the development of the Institute in the mainland. We believe that the committee and the forums provide a platform for members to work together in order to promote surveying profession and to capitalize our advantage in the National 12th Five-Year plan.

Members may receive the latest publication of "Surveying and Built Environment" (SBE). This is a special issue to commemorate the 70th Anniversary of the Battle of Hong Kong 8 December to 25 December 1941. Thanks the SBE's Editor-in-Chief Professor Kwong-wing Chau and the Issue Editor Professor Lawrence Lai for their effort on the

publication. We are glad to hear that the issue has received some encouraging and positive feedbacks from the public. We believe that the publication may help the public to realize that surveyors play an important role in heritage conservation.

To meet the 3-3-4 education reform, Board of Education is busy in liaising with the local universities on the possible amendments of the content of the surveying courses.

今年，我們將目睹多個地區（例如：香港、中國內地及一些西方國家）的政府換班。這些轉變將為我們的社會及經濟帶來機遇及挑戰。當我執筆撰寫之時，特首選舉剛完結。我們很高興會員兼前會長梁振英測量師被選為下一任行政長官。作為建築及房地產行業其中一個主要專業學會，以及一所關愛社會的組織，我們特別關注有關香港建築環境的政策。香港測量師學會將會繼續透過向新一屆特區政府提供中立及專業意見，參與香港公共及社會事務。

我們注意到十大基建項目帶動建築工程的蓬勃發展，而公共及私人房屋建造數量亦開始回升。自去年，通過實施特別印花稅及收緊銀行借貸，住宅物業市場已經放緩。我們認為持續進修有助提升會員能力及競爭力，以應付以上的轉變及挑戰。我誠邀各位積極向專業發展委員會及組別理事會表達持續進修的意見，學會才能更有效協助會員面對未來挑戰。

現時，我們約有 600 名會員在內地執業。學會考慮到在內地的會員數目日增，因此已成立由張孝威測量師領導的內地事務委員會，以及於北京、廣州和上海成立議會，並分別由譚成基測量師、曾正麟測量師及李佩華測量師擔任召集人。內地事務委員會及議會主要負責安排聯誼活動、為會員物色合適的持續進修機會和與內地相關單位聯繫。學會亦顧及不在議會地區範圍工作的會員的需要，內地委員會將物色機會到訪不同的城市及地區，與會員交流最新市場及學會的資訊。歡迎各會員聯絡議會召集人及內地事務委員會主席，為學會在內地的發展發表意見及建議。我們相信，委員會及議

Thanks all board members for working hard on behalf of the Institute under such a tight schedule.

Aligning our strengths and opportunities, we shall continue to thrive.

Serena Lau
President

會為會員工作提供平台，共同提升測量專業的形象，以及抓緊國家十二五規劃的機遇。

我相信會員已收到最新一期的「測量及建築環境」(SBE)，此乃一本紀念 1941 年 12 月 8 日至 12 月 25 日期間的一場香港戰事的 70 週年特刊。在此，特別鳴謝 SBE 的總編輯鄧廣榮教授測量師及該特刊編輯黎偉聰教授。我們對於該特刊得到大眾的正面回饋感到高興。我們相信，該刊物會協助大眾認知測量師於古物保育方面的角色。

為迎合 3-3-4 學制的改革，教育委員會正忙於與本地大學聯繫，商討測量課程的內容是否需因應學制轉變而有所改動。在倉促的時間下，感謝委員會各會員的辛勤工作。

結合我們的專長與機遇，學會將持續輝煌發展。

劉詩韻測量師
會長

5 Years Plus Caring Organisation Logo



With the nomination from the Agency for Volunteer Service, the HKIS has been awarded the 5 Year Plus Caring Organisation

Logo in recognition of the the commitment in Caring for Community, Caring for Employees and Caring for the Environment over the past years.

Newly-Elected Chief Executive of the HKSAR

It is the Institute's pleasure to have our member as well as our Past President Mr CY Leung to be elected as the Chief Executive of the Hong Kong Special Administrative Region for the term of next 5 years. Our President Ms Serena

Lau, on behalf of the Institute, sent Mr Leung a letter to congratulate his success in the Chief Executive Election on Sunday, 25 March 2012.

Congratulations to the Following who were Elected as HKIS Members on 22 March 2012

MEMBERS (79)

BS DIVISION

LAU SZE KI
LI WING YAN
NG KA WING
TSUI MAN KWONG
WONG PUI FUNG

GP DIVISION

CHAN CHU WAH
CHAN KA KI
CHAN MING SZE
CHAN WANG NGAI CLEMENT
CHEUNG KIT HUNG
CHING KIN LAM
CHOI SHUK HANG KAREN
FUNG YING HUEN
JEONG HAI YEUN
KO PING YIN
KWOK YEE MAN
LAM KA HO
LAU MIU CHUN
LEUNG KA MAN
LI WING SZE
LIU HO CHI
LUK MAN CHOI

NG PUI SHAN
NG SIU KI
SHA YAN YI JANICE
SHUM TSZ KI
SMITH, SIMON THOMAS
SO KAI PAN
TSANG WAI YEE
TSE KWAN YAT
TSUI KIT YING
WONG HO YI
WONG TAK CHIU LESLIE
WONG TSZ CHUN KEVIN
WONG YAT HANG
YEUNG KIN LUN
YU KA KIT
YUEN CHI CHUN

LS DIVISION

YAU CHI CHEUNG BILLY

QS DIVISION

CHAN CHEONG MAN
CHAN LAI YAN
CHAN WING KWAN
CHANG HAU CHUN
CHAU TSZ KIT TONY
CHENG CHING MAN

CHEUNG HO TING CHERRY
CHOW HIU TUNG DOROTHY
HO KA LUNG
HUNG WAI KIN
IP HIU KWAN
KWOK HIU YIN
LAM HIU YAN
LAM YUN YEE
LAW WING SZE
LEE POK WAI
LEUNG WING YI
LI YAT NAM
LIN YUK CHO
LO LAI YING
LOU IOI SAM
LUI YING HO
MOOK KING TONG
NG KA WAI
SIU HOI TUNG
TAM KA MAN
TO WAN PUN
TSANG KAI KONG
TSE PIK YI
WAN HIU LUI
WONG CHI HAN
WONG KA MAN CELINA
WONG OI YIN

WONG SIU HO
WONG YIU CHUNG
WU IM CHAO
YAU LAI YUEN
YOUNG CHIU YAN
YUEN HOK PAN
YUNG CHI WAI

CORPORATE MEMBERS REGISTERED IN OTHER DIVISIONS (3)

PD DIVISION

HUNG CHUEN KA
NG KO FUNG

PFM DIVISION

POON CHOR KUEN ERIC

RESIGNATION (4)

CHEUNG YIN PING
CHIU YUEN HAN
MAK KAM FAI LEO
SO CHEUNG LUN OLIVER

Invitation for Recommendation of Alternative Office Premises

The current tenancy of the HKIS Office Premises at Jardine House will expire in early 2013. A Working Group has been formed to identify and recommend if there are other suitable office premises available in the market for the Institute to consider for renting.

The Working Group is now inviting members to submit details of office premises, which meet the basic criteria as listed below and are available for the Institute for consideration for renting :-

Basic Criteria:

- Area : Around 5,000 sq ft net
- Grade : B or above
- Location : Hong Kong Island
- Rental : Around HK\$30 per sq ft (gross) per month
- Availability : Not later than September 2012
- Others : Close proximity to MTR station

If members have any recommendation of office premises, please submit details on or before 22 April 2012 to "The Hong Kong Institute of Surveyors, Suite 801, 8/F, Jardine House, 1 Connaught Place, Central, Hong Kong, for the attention of Working Group on New Office Premises".

| Date | Event | Organiser | Location |
|------------------|--|-----------|--------------------------|
| 2012 | | | |
| Apr 26 | HKIS Executive Committee Meeting | HKIS | Board Room, HKIS |
| May 6-10 | FIG Working Week | FIG | Rome, Italy |
| 24 | HKIS General Council Meeting | HKIS | Board Room, HKIS |
| 24 | HKIS Executive Committee Meeting | HKIS | Board Room, HKIS |
| Jun 23-27 | International Cost Engineering Council 8 th World Congress | KEC | ICC Durban, South Africa |
| 28 | HKIS Executive Committee Meeting | HKIS | Board Room, HKIS |
| Jul 7 | Young Quantity Surveyors Group Programme 2012 | PAQS | Brunei Darussalam |
| 26 | HKIS General Council Meeting | HKIS | Board Room, HKIS |
| 26 | HKIS Executive Committee Meeting | HKIS | Board Room, HKIS |
| Aug 23 | HKIS Executive Committee Meeting | HKIS | Board Room, HKIS |
| 25-Sep1 | The XXII Congress of the International Society for Photogrammetry and Remote Sensing | ISPRS | Melbourne, Australia |
| Sep 27 | HKIS General Council Meeting | HKIS | Board Room, HKIS |
| 27 | HKIS Executive Committee Meeting | HKIS | Board Room, HKIS |

For details, please visit www.hkis.org.hk or contact the HKIS office on 2526 3679. Board Room, HKIS = 810 Jardine House, 1 Connaught Place, Central, Hong Kong. SLC, HKIS = 811 Jardine House, 1 Connaught Place, Central, Hong Kong.

Council Members Reaching Out

| | | |
|-------------------------|--|---|
| 2 March 2012 | Stakeholder Round Table Discussion on Fire Engineering Studies for Historic Building | Mr Spencer Kwan Mr Vincent Ho Mr Raymond Chan Mr Samson Wong |
| 2 March 2012 | Public Forum on "Cities for People - Public Space & Public Life in Kowloon East" organised by Planning Department | Ms Serena Lau Mr Simon Kwok Mr Gary Yeung |
| 8 March 2012 | The Hong Kong Institute of Architects Spring Reception 2012 | Ms Serena Lau |
| 8 March 2012 | The 37th Annual Dinner of Chartered Institute of Arbitrators (East Asia Branch) | Ms Serena Lau |
| 9 March 2012 | RICS Hong Kong Annual Dinner 2012 | Ms Serena Lau |
| 9 March 2012 | Safety Awards 2012 organised by the Lighthouse Club | Mr Stephen Lai |
| 10 March 2012 | Panel on Development Meeting on the Government's strategy to enhance land supply through reclamation outside Victoria Harbour and rock cavern development organised by Legislative Council | Mr Lau Chun Kong |
| 12 March 2012 | Annual General Meeting and Dinner of the Association of Architectural Practices Ltd | Ms Serena Lau |
| 13 March 2012 | The Hong Kong Institution of Engineers 37th Annual Dinner | Ms Serena Lau |
| 14 March 2012 | Luncheon with HKTDC's Director of Service Promotion | Ms Serena Lau Mr Simon Kwok Mr Robin Leung Mr Gary Yeung |
| 17 March 2012 | Hong Kong Institute of Project Management Annual Dinner 2012 cum 2011 Asia Pacific Project Management Achievement Awards Presentation | Ms Serena Lau |
| 20 March 2012 | Inauguration Ceremony of Executive Committee of Architectural Society, HKUSU | Ms Serena Lau |
| 21 March 2012 | Lunch meeting with Hong Kong Construction Association | Ms Serena Lau Mr Stephen Lai Mr Simon Kwok Mr Robin Leung Mr Gary Yeung Mr Wong Bay Mr Vincent Ho Mr Francis Ng Mr Raymond Chan Mr Dick Kwok Mr Thomas Ho |
| 22 March 2012 | Construction Industry Council 5th Anniversary Cocktail Reception | Ms Serena Lau Mr Thomas Ho |
| 23 March 2012 | The Institution of Fire Engineers (Hong Kong Branch) 53rd Annual Dinner | Mr Stephen Lai |
| 27 March 2012 | Spring Dinner of Commercial Office, Economic Affairs Department, Liaison Office of the Central People's Government in the Hong Kong Special Administrative Region | Mr Stephen Lai |
| 30 March 2012 | Closing Ceremony of the 10th Anniversary of the International Year of Volunteers (IYV+10) | Ms Serena Lau |
| 30 March – 1 April 2012 | HKIUD Urban Design Conference on "Urban Design as Public Policy" organised by Hong Kong Institute of Urban Design | Mr Simon Kwok |

Building Surveying Division Chairman's Message



Vincent Ho BSD Council Chairman

March usually denotes the end of a financial year asking for a review of achievements in the immediate past year. In 2012, March may also symbolize the start of some change in our society, at least, in some people's eyes. Being a member

of the Election Committee in the CE Election, I have tried to collect views from our surveyors and wished to make a representing vote as long as the election system can provide.

Structured Learning Course of Expert Witness on Water Seepage Disputes

A series of Structured Learning Course of Expert Witness on Water Seepage Disputes has been launched in March. We have our first and second strikes of the series on 17 March and 22 March 2012, namely "Provisional List of Expert Witness on Water Seepage Disputes - Preparation of expert report" by speaker Mr David Chan and "Professional ethics and role of expert witness" by Professor James Pong. The third lesson of the series on Law of Evidence for Surveyors was delivered by Professor Leung Hing Fung on 27 March 2012.

beneficial in the light of the forthcoming implementation of MBIS. If you have missed this time, please pay attention to our announcement in future.

It is our wish and determination to establish a full list of expert witness on water seepage disputes which will be accessible to the general public. A provisional list will be set up in the meantime to deal with requests for nomination received from litigating parties and court from time to time. The achievement is undoubtedly relied on your participation and indefinitely it is a win-win assignment for the development of our profession and the convenience to the general public to enquire the professional service provided by our members.

The provisional list will be open to those BSD members who:-

- a. are Fellow members or with a minimum of 10 years post-qualification experience;
- b. have prepared at least 5 expert witness reports on water seepage dispute for litigation purpose in the past 5 years; and
- c. have attended court to give evidence on water seepage dispute.

Notwithstanding the above three criteria, any member who has acquired comparable experience in the related dispute resolution cases may make an application for consideration. In this regard, you are cordially invited to subscribe to the list by completing and returning the Application Form at <http://www.hkis.org.hk/hkis/general/broadcast/2012027AF.docx> for the consideration of Expert on Water Seepage Appointment Panel. The above criteria will be subject to revision and the provisional list will lapse should the full list be in force or as determined by BSD.



CPD event "Provisional List of Expert Witness on Water Seepage Disputes - Preparation of expert report?" held on 17 and 22 March 2012 respectively

We wish the course could be held regularly in the long run, and only those members who completed this structural learning course with the relevant qualification and experience will be eligible for application for inclusion in the full list of Expert Witness on Water Seepage Disputes. I find the series

CPD Events

There were a number of CPD events held in March:

On 12 March 2012, “Briefing Session on Buildings (Amendment) Ordinance 2011 for MBIS and MWIS” was delivered by Mr Tsui Ho, Patrick, Chief Building Surveyor of the Buildings Department. The Buildings (Amendment) Bill 2010 was passed on 29 June 2011 as the Buildings (Amendment) Ordinance 2011. The Mandatory Building Inspection Scheme (MBIS) and Mandatory Window Inspection Scheme (MWIS) which we have heard for years will soon come into operation (in the second quarter of the year). You can visit <http://www.hkis.org.hk/hkis/general/events/cpd-2012028.pdf> for presentation notes of the CPD. The Buildings Department has already opened the application for registration as the Registered Inspectors (RI). Here, I would like to encourage again our members to grasp the opportunity to apply for registration as Registered Inspector (RI) to the Buildings Department in order demonstrate our capability as an expert in the field of building inspection, maintenance and repair.



Mr Vincent Ho presenting a souvenir to Mr Tsui Ho Patrick at the CPD event held on 12 March 2012

On 14 March 2012, “What is the meaning of ‘site’ from the perspective of property development?” was jointly delivered by Mr. Louie Chan and I. It was worth noting that two recent appeals [HCAL49/2010 and HCAL20/2011] from Appeal Tribunal (Buildings) to Court of First Instance had challenged the Buildings Authority’s decisions on the extent to which the development potential as shown proposed in the plans submitted for the underlying development and they were used for discussion in the CPD. The legal issues taken by the developer and the Building Authority were briefed and our practitioners were addressed on various issues in the practice of property development.



CPD event “What is the meaning of ‘site’ from the perspective of property development?” held on 14 March 2012

Talks for HAD and HKHS on Building Maintenance and Repair Projects

I have delivered two talks for the workshop held by HAD and HKHS for Tuen Mun and Yuen Long districts on 29 February and 21 March respectively. I have addressed the participants on how to select the consultant and contractor for the repair and maintenance works as well as the key issues in monitoring the performance of the appointed consultant and contractor. I am glad that the talks are well received by the participants and see the drive and anxiety of the owners to seek the “proper” professional advice and guidance of building professional and of course the help

of building surveyors. However, I have received a very clear message and concern from the owners that what assistance could be provided by the respective professional institute including the HKIS to them in case they encounter a “non-performing” consultant. On this issue, I trust more education on profession ethic to our members would be essential. In parallel, we should do more introduction to the public of the disciplinary power of HKIS on complaint against our members on non-ethical and unprofessional act.



General Practice Division Chairman's Message



Francis Ng GPD Council Chairman

Congratulation to Mr CY Leung, GP Surveyor, to be the Chief Executive-elect

HKIS GPD congratulates Mr CY Leung's success in the Chief Executive election. GPD Council Members are most delighted that a senior GP surveyor has been recognised by the Hong Kong Community and stands out for the well being of Hong Kong. We are pleased to learn that the Chief Executive-elect has pledged in his election platform to develop a long term vision for Hong Kong which includes formulation of sustainable residential and commercial strategies as well as building of a healthy land reserve. No doubt, CY's exposure,

wisdom, knowledge including expertise on land, property and construction will be of great asset for development of the territory.

GPD Council will continue to work closely with the administration, and prospective governing bodies, bureaux and departments in formulating policies related to land, property and constructions for the betterment of Hong Kong.

Application for HKIS Membership by RICS Members

Under the Reciprocity Agreement signed by HKIS and RICS in 2005, corporate members of RICS (MRICS) admitted to membership in the extant Facilities (which is now changed to "professional pathways") whose principal place of practice is in Hong Kong may upon application to HKIS be admitted as a member of HKIS (MHKIS) in the relevant Divisions and may be entitled to all privileges of HKIS membership including use of the designation of professional surveyors and designatory letters subject to:

- a. one year's post qualification professional practice in Hong Kong relevant to a Division of HKIS; and
- b. a professional interview conducted at the discretion of HKIS to verify the applicant's competence and suitability for admission to the relevant Division.

From time to time, Board of Membership of HKIS receives applications from RICS members for HKIS membership under

the reciprocity agreement. For the purpose of verifying the applicant's competence and suitability for admission to the **relevant Division** may be necessary. In this message, I would elaborate on the GPD arrangement, i.e. professional interview (discretionary, on a case by case basis) may be necessary for all RICS members in order to confirm the applicants' competence and suitability.

For administrative reasons, GPD has decided to arrange such admission interview to take place twice a year, i.e. in June and December in respect of applications received respectively on or before 30 April and 31 October. Candidates who wish to apply for GPD (HKIS) corporate membership should note the dates and submit their applications on time.

Follow up on New Scale of Professional Charges

As members may be aware, the new “Scale of Professional Charges for General Practice Services in Hong Kong” (“Scale of Charges”) was revised in 2011. This new fee scale aims to replace the old fee scale which was published seventeen years ago jointly by HKIS and RICS (HK Branch). The new fee scale is advisory in nature and is published for the guidance of Professional GP Surveyors. This document is widely adopted by practitioners and URA when determining professional fees.

In order to promote wider use of this new fee scale, the “Working Group on new Scale of Charges” has had meetings with various stakeholders including further discussion with Acquisition Section of the Lands Department in March. Members of the Working Group are Messer C K Lau, Alnwick Chan and Rock Tsang.



New Scale of Professional Charges was published on 1 July 2011

HKIS / RICS(HK) Joint Guidance Notes for Commercial Rent Reviews in Hong Kong

A Working Group on Guidance Notes for Commercial Rent Reviews in Hong Kong (working group members: Messer C K Lau, David Faulkner, Paul Dwyer, Simon Lynch) has re-considered the said guidance note. The updated draft is being scrutinized by an appointed legal consultant - Ms Minter Ellison. The first draft of the Joint Guidance Notes was

prepared on 14 March 2012. This has taken into account RICS Guidance Notes, current practice on appointment of independent valuation expert by HKIS and suggestions/comments by the working group. Members will be kept informed of progress in due course.

Vetting Panel for Real Estate Valuers and Business Valuers for Public Disclosure Purposes

A Panel for Real Estate Valuers and Business Valuers Public Disclosure Purposes has been formed to vet qualification of professional surveyors. The first meeting of the panel was held on 5 March 2012 and went through the terms of

reference, regulations and associated business of the vetting panel. The Panel will come into place once related issues have been firmed up. Members will be kept informed of the progress in the near future.

Land Supply Working Group

After making a written submission to the LegCo Panel in February, HKIS representative, Messer CK Lau had made a 3-minute presentation at LegCo on 10 March 2012. In the submission, CK had raised the following issues for consideration, viz:

- Government to promote co-operation/co-investments with owners of landed property
- Strategic review of density control in NT
- Land premium policy to be changed “in principle” including assumptions on the before land value and sharing of synergetic value

- Review on compensation law and use of resumption powers/purchase actions

It is anticipated that the land supply issue including current consultation on reclamation outside Victoria Harbour and development of rock cavern would be on-going in coming years. Thus, the Land Supply Working Group under GPD would need to take a long term and sustainable approach when considering these issues. Further elaboration, research and action plans are required. GPD will look for appropriate administrative and research supports with a view to take up the case further.

The 7th Cross Strait Land Conference(第七屆兩岸四地土地學術研討會)

The 7th Cross Strait Land Conference will be held on 5 to 7 June 2012 in Macau. This Conference is co-organized by four related Institutes - HKIS, DSCC of Macau (澳門地圖繪製暨地籍局), Faculty of Geography of Taiwan Politics University (臺灣政治大學地政學系) and the Land Administration Faculty of People's University of China (中國人民大學土地管理系). The first Conference was held in 2000 and thereafter bi-annually.

The theme of the 7th Cross Strait Land Conference is “Development and Innovation of Land Use theory and techniques”(土地理論和技術的發展與創新), which includes the following aspects:

- Land development and renewal;
- Use of database in land renewal;

- Land development and environmental assessment;
- Land use and urban development;
- Urban land use and system innovation;
- Land tenure system and economic development; and
- Land use in city and village and economic development.

Discussion paper (in Chinese, MS Word format) for the conference is now called with the closing date on 31 March 2012. Interested members are encouraged to submit their articles to DSCC (email: dsfp_2012@dsc.gov.mo). HKIS representatives are Messer Edward Au and, Lawrence Poon and Vice President Mr Simon Kwok. They are working on detailed arrangement of the conference. Members will be kept informed on progress and invited to attend the Conference in due course. 🇺🇸

General Practice Division Assessment of Professional Competence Referred Oral Assessment 2012

The GPD Referred Oral Assessment 2012 will take place in June 2012. Application form for the Referred Oral Assessment 2012 (APC6/GP/F11) can be downloaded from our website (HKIS main page ⇨ Professional Development ⇨ APC/ATC ⇨ GPD). Completed form must be returned to HKIS no later than 12:30pm, Monday, 30 April 2012.

Please call HKIS Education Department on 2526 3679 for more details.

共織城市肌理 Weaving New City-Fabric

徵集荃灣繞道

隔音設施及擋土牆設計

Call for Noise Mitigation/Retaining Structure Design for Tsuen Wan Bypass

Entry Groups & Prizes

Professional Group

Open to qualified professionals in the fields of architecture, engineering, landscape architecture, planning, urban design and surveying (i.e. full members of professional institutes or bodies, e.g. HKIA, HKIE, HKILA, HKIP, HKIS, HKIUD, or equivalent). Entries for Professional Group made by Companies will be accepted. Collaborative Entries (Team) are also permitted.

1 Winning Entry

HK\$360,000 prize

3 Finalist Entries

Each HK\$120,000 prize

Open Group

Open to the general public with age 18 or above. Participants who have submitted or are submitting Entries for the Professional Group are not allowed to enter or participate in preparation of Entries in the Open Group. Entries made by Companies will not be accepted for Open Group. Collaborative Entries (Team) are permitted.

1 Winning Entry

HK\$80,000 prize

3 Finalist Entries

Each HK\$35,000 prize

Registration Deadline : 12 April 2012

Enquiry : enquiry@twbnoisemitigation-design.hk

www.twbnoisemitigation-design.hk



Promoter



Co-organisers



HKIE



Supporting Organisations



Summary of HKIS CPD / PQSL Events

14 April 2012 - 05 July 2012

| DATE | CODE | EVENT | CPD HOUR(S) | SPEAKERS | RUN BY | PQSL |
|---------------------|---------|---|-------------|--|--------|------|
| 14 Apr | 2012037 | Visit to Construction Industry Resource Centre | 3 | Yuk-Lung Cheung, Perry Lo | QSD | |
| 16 Apr | 2012023 | Building Information Modelling (BIM) Development in HK and Quantities Take Off from BIM | 1.5 | Ir Francis Leung | QSD | |
| 19 Apr | 2012029 | Technical Seminar on Landscaping Slopes: Promulgation of the GEO Publication No. 1/2011 – Technical Guidelines on Landscape Treatment for Slopes | 1 | Ir Allan Watkins, Matthew Pryor, Dr Billy Hau | HKIS | |
| 23 Apr | 2012020 | Consultant's Roles in PRC Projects including LDI | 1.5 | Johnson W L So | QSD | |
| 24 Apr | 2012022 | NEC: Lessons from Nearly 20 Years in the UK and Elsewhere : Implications for Hong Kong | 1.5 | Richard Patterson | QSD | |
| 25 Apr | 2012039 | Land Boundary Court Cases and Dispute Resolutions | 1.5 | Dr Tang Hong-wai Conrad | LSD | |
| 27 Apr | 2012038 | What is Cold Cathode Fluorescent Light (CCFL) and its application in general lighting purposes | 1.5 | Franco Wong | YSG | |
| 02 May | 2012031 | Use of BIM in Construction Company | 1.5 | Welle Ng | QSD | |
| 05 May | 2012032 | Waste Management and Recycling : Visit to EcoPark and its Tenants | 2.5 | Representatives for EcoPark and its Tenants | QSD | |
| 09 May | 2012042 | Can Quantity Surveyors become good Project Managers? | 1.5 | Kenneth Poon | QSD | |
| 10 May | 2012036 | Sharing Session on "Energizing Kowloon East" | 1.5 | K K Ling | HKIS | |
| 11 May | 2012041 | Coffee Class & BS News Discussion | 1 | Coffee Master from Starbucks Coffee | BSD | |
| 17 May | 2012026 | Enhancing Sales with Marketing | 1.5 | Tony Tse Wai Chuen | GPD | |
| 21 May | 2012033 | From A GP Surveyor becoming a Project Manager | 2 | M Y Wan | YSG | |
| 29 May | 2012034 | New Business Hubs & Revitalizing Industrial Properties | 1.5 | James Siu, Raymond Pun | YSG | |
| 09 Jun or 16 Jun | 2012030 | QSD APC Workshops 2012 | 4 | Experienced Assessors of QSD APC | QSD | ✓ |
| 13 Jun | 2012019 | Slope Hazards and their Mitigations in Hong Kong | 1.5 | Dr C K Lau | GPD | |
| 05 July | 2012040 | Housing for the Elderly in Hong Kong | 1.5 | Professor Francis Wong | GPD | |

Details of individual CPD/PQSL events are provided in the Surveyors Times and/or HKIS Website www.hkis.org.hk. Please use the STANDARD RESERVATION FORM overleaf for registration. For enquiries, please email cpd@hkis.org.hk or call the Secretariat on 2526 3679.

CPD/QSD/2012037

Visit to Construction Industry Resource Centre



Speakers Mr Yuk-Lung Cheung, Senior Manager of Development & Support Services, Construction Industry Council
Mr. Perry Lo, MHKIE, Senior Project Manager of Chinney Construction Co., Ltd.

Date & Venue 9:30am – 12:30pm Saturday 14 April 2012
Construction Industry Resource Centre, 44 Tai Yip Street, Kowloon Bay, Kowloon

Details Itinerary :
9:15am – Gathering at Kowloon Bay MTR Station (Exit A)
12:30pm – Dismiss at Construction Industry Resource Centre (44 Tai Yip Street, Kowloon Bay, Kowloon)
(Successful registration will receive details of the visit.)

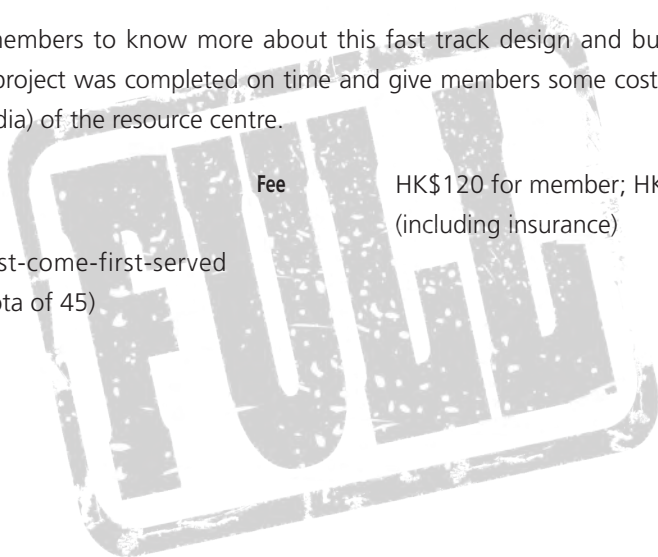
Construction Industry Resource Centre was newly completed in February 2012. It is located on the Ground Floor of the CIC Training Academy Kowloon Bay Training Centre. By integrating up-to-date information technology and multi-media simulating systems, the resource centre serves as a one-stop information hub to promote the construction industry in Hong Kong. The resource centre's total floor area is about 10,000 sq. ft. and is divided into 9 zones including reception area, hall of fame, focus group meeting room, good practice area, green construction zone, library/reading area, multimedia zone, discovery and gallery.

The programme of this visit will include a tour to the Construction Industry Resource Centre and a talk regarding the fast track construction of this design and build project delivered by various parties participating into the construction of the resource centre including the Senior Manager of CIC and the Senior Project Manager of the Main Contractor.

The tour will be guided by CIC's representatives. Members will be allowed to visit different zones so as to realize the updated one-stop construction information. More interestingly, members will also be allowed to experience the operation of tower crane and excavator through the simulators.

In order to allow members to know more about this fast track design and build project, the speakers will also brief members how the project was completed on time and give members some cost indications on design and construction (including multi-media) of the resource centre.

| | | | |
|-----------------|--|------------|---|
| Language | Cantonese | Fee | HK\$120 for member; HK\$150 for non-member (including insurance) |
| Priority | QSD members; First-come-first-served (with maximum quota of 45) | | |



CPD/QSD/2012023

Building Information Modelling (BIM) Development in HK and Quantities Take Off from BIM

| | | | |
|-------------------------|--|------------|--|
| Speaker | Ir Francis Leung, Chairman of Hong Kong Institution of Building Information Modelling (HKIBIM) | | |
| Date & Venue | 7:00pm – 8:30pm Monday 16 April 2012 Surveyors Learning Centre, Suite 811, 8/F., Jardine House, Central, Hong Kong | | |
| Details | <p>Building Information Modelling (BIM) is the process of generating and managing building data during its life cycle. Typically, it uses three-dimensional, real-time, dynamic building modelling software to increase productivity in building design and construction. The process produces the Building Information Model (also abbreviated BIM), which encompasses building geometry, spatial relationships, geographic information, and quantities and properties of building components.</p> <p>Ir Francis Leung is the Founding Chairman of HKIBIM and director of BIM department of a multi-disciplinary consulting engineering company. He will give our members an introduction and update of BIM development in the construction industry of Hong Kong and discuss, using structural element as example, the constraints and approaches to achieve accuracy in quantities take-off from BIM model.</p> | | |
| Language | English | Fee | HK\$120 for member; HK\$150 for non-member (HK\$20 walk-in surcharge for all pricings listed); Free of charge for full time university student (subject to availability) |
| Priority | QSD Member; First-come-first-served | | |

CPD/HKIS/2012029

Technical Seminar on Landscaping Slopes: Promulgation of the GEO Publication No. 1/2011 – Technical Guidelines on Landscape Treatment for Slopes



Jointly organized with HKIA, HKIP, HKILA

| | | | |
|-------------------------|---|------------|--------------------|
| Speakers | <p>Ir Allan Watkins, Director, Halcrow China Limited</p> <p>Mr Matthew Pryor, Head of Division and Assistant Professor, Division of Landscape Architecture, Faculty of Architecture, The University of Hong Kong</p> <p>Dr Billy Hau, Assistant Professor, School of Biological Sciences, The University of Hong Kong</p> | | |
| Date & Venue | 7:00pm – 8:00pm Thursday 19 April 2012 Surveyors Learning Centre, Suite 811, 8/F., Jardine House, Central, Hong Kong | | |
| Details | <p>The newly published GEO Publication No. 1/2011 “Technical Guidelines on Landscape Treatment for Slopes” is to provide technical guidance on landscape treatments for man-made slopes and engineering works on natural terrain, with a view to enhancing slope appearance and making them ecologically acceptable and sustainable. The guidelines are based on best current practice in Hong Kong, together with experience from overseas that warrants consideration in Hong Kong’s geological and environmental conditions. This Publication supersedes GEO Publication No. 1/2000.</p> <p>The updating of the Publication was undertaken by a Halcrow’s team led by Ir Allan Watkins, Director of Halcrow China Limited, in collaboration with Mr Matthew Pryor and Dr Billy Hau of the University of Hong Kong. This Seminar aims to introduce the new GEO Publication No. 1/2011. Examples of landscape treatments on slopes with lessons learnt will also be discussed to illustrate the essence of the guidelines.</p> | | |
| Language | English | Fee | HK\$100 for member |
| Priority | First-come-first-served | | |

CPD/QSD/2012020

Consultant's Roles in PRC Projects including LDI

| | | | |
|-------------------------|---|------------|--|
| Speaker | Mr Johnson W. L. So FHKIS, FRICS, MBA, BSc (Sun Hung Kai Properties – Special Projects Department) | | |
| Date & Venue | 7:00 pm – 8:30 pm Monday 23 April 2012 Surveyors Learning Centre, Suite 811, 8/F., Jardine House, Central, Hong Kong | | |
| Details | <p>Facing the globalization of business nowadays, especially in the properties market in PRC, which provides huge opportunities in business development, many Hong Kong / Overseas Consultants are actively joining the consultancy services for both Local and Overseas Developers.</p> <p>This topic covers a wide range of Consultant's practices and their roles in comprehensive PRC projects including the combination of various Local Design Institutes (LDI). It highlights the scope of services of different disciplines and demarcation of the duties amongst Local and Overseas Consultants including those from Hong Kong. The aim is to address the key issues and interaction arising from the Consultant's and PM team during the course of works, and the ways to avoid conflicts between parties.</p> <p>This seminar also touches on the fee scales, liability and copy right, fee payment issues / payment mechanism from Developer's point of view. A SWOT analysis is to be presented to explore the future opportunities in running projects in PRC by the Consultants.</p> <p>Mr. Johnson So will share his knowledge and experience in this aspect.</p> | | |
| Language | Cantonese with English supplement | Fee | HK\$120 for member; HK\$150 for non-member (HK\$20 walk-in surcharge for all pricings listed); Free of charge for full time university student (subject to availability) |
| Priority | QSD Member; First-come-first-served | | |

CPD/QSD/2012022

NEC: Lessons from Nearly 20 Years in the UK and Elsewhere : Implications for Hong Kong

| | | | |
|-------------------------|--|------------|--|
| Speaker | Mr Richard Patterson, BA MBA CEng MICE Procurement and NEC Specialist, Mott MacDonald Group | | |
| Date & Venue | 7:00 pm – 8:30 pm Tuesday 24 April 2012 Surveyors Learning Centre, Suite 811, 8/F., Jardine House, Central, Hong Kong | | |
| Details | <p>Mr Richard Patterson is a chartered civil engineer and procurement and NEC specialist with global development, engineering and management consultant, Mott MacDonald Group. Richard has more than 21 years' experience with Mott MacDonald in the UK and in Australia, Bahamas, Botswana, Ethiopia, Hong Kong, Lesotho, New Zealand, Pakistan, Romania, Russia, St Kitts and Nevis, Turkey and Vietnam. Many of his international works have been on bank funded projects, often using FIDIC forms of contract.</p> <p>Richard has key skills in procurement (in particular NEC), collaborative working, knowledge management, and facilitation and training. He advised on possibly Mott MacDonald's first use of NEC in 1996 and has been working with NEC ever since. He supports Mott MacDonald's teams and their clients in all sectors from the Halley VI research station on the Antarctic, Transnet in South Africa, the Jumeriah Golf Estates in Dubai and now in Hong Kong, where he has supported Mott MacDonald Hong Kong as NEC Specialist on a total of five commissions advising Architectural Services Department (ArchSD), Highways Department and Drainage Services Department of the Government of Hong Kong SAR on their trial NEC projects covering the use of Engineering and Construction Contract and Term Service Contract including target and lump sum options with Employer's and Contractor's design.</p> <p>Richard delivered a speech – "Working in Collaboration – A Step Forward" in ArchSD 25th Anniversary Symposium in April 2011. He is a frequent contributor to the NEC Newsletter, and has had a number of NEC papers published in ICE's Proceedings and sits on the Editorial Advisory Panel of the ICE's journal, Management, Procurement and Law. (See: http://uk.linkedin.com/in/coolsoberandsmiling)</p> <p>With his wide NEC experience in the UK and other countries and his involvement in the Hong Kong Government's trials of the New Engineering Contract (NEC), Richard will share some of the key lessons from over 20 years of its application in the UK and elsewhere and how the lessons learnt should provide insight to the trial use of NEC in Hong Kong. Richard will include issues relating to collaboration and risk management and lessons from target (Option C and D) contracts that have not gone so well.</p> | | |
| Language | English | Fee | HK\$120 for member; HK\$150 for non-member (HK\$20 walk-in surcharge for all pricings listed); Free of charge for full time university student (subject to availability) |
| Priority | QSD Member; First-come-first-served | | |

CPD/LSD/2012039

Land Boundary Court Cases and Dispute Resolutions



Speaker Dr Tang Hong-wai Conrad, Associate Professor, Department of Land Survey and Geo-Informatics, The Hong Kong Polytechnic University

Date & Venue 6:30pm – 8:00pm Wednesday 25 April 2012
Surveyors Learning Centre, Suite 811, 8/F., Jardine House, Central, Hong Kong

Details A common law judge interprets the parcels clauses and plans in a conveyance to ascertain land boundaries. Usually there are uncertainties and contradictions in old transaction documents. In many cases subsequent survey results may not be accepted as a definitive land boundary record of the original grant documents. Some judges may lay out principles of accepting land boundary extrinsic evidence which are important to land surveying practices. Others may just accept expert witness of either party for the sake of settling disputes.

Although most cases are not boundary-truth finding, there are judges who have set ratio decidendi in boundary determination. From over a hundred known court cases related to boundary disputes, including two cases reaching the Final Appeal Court, a presentation of about ten of them with plans and photos will be discussed.

In addition, it is a recent trend in our courts that alternative dispute resolutions should be sought before trial, which may have significant impacts on the land surveying professional practice. Land surveying expert role on boundary disputes in common law courts will be discussed.

Language Cantonese supplemented by English

Fee HK\$100 for member

Deadline 23 April 2012

Priority First-come-first-served

CPD/YSG/2012038

What is Cold Cathode Fluorescent Light (CCFL) and its application in general lighting purposes



Speaker Mr Franco Wong
Senior Manager - Marketing and Sales, Rhythm Green Ltd.

Date & Venue 7:00pm – 8:30pm Friday 27 April 2012
Surveyors Learning Centre, Suite 811, 8/F., Jardine House, Central, Hong Kong

Details You probably have used of incandescent lights, compact fluorescent lights and LED lights for general lighting purposes, however, have you heard/used of cold cathode fluorescent light?

In short, the technology used in Cold Cathode Fluorescent Light (CCFL) is evolved from conventional CCFL that has been used as the backlight for car dashboard, LCD screens and laptops, and also the light source of photo-copiers/printers and scanners for last couple of decades. Because of its very good lighting quality, ultra energy efficiency, extreme long-life, durability, smooth dimming and flashing capability, CCFL can produce ultra energy efficient light fittings that can deliver high quality lighting for many applications.

Rhythm Green Limited is setup to be an environmental care company and is a manufacturer of CCFL products. Rhythm Green Limited is creating and advancing energy saving technologies for lighting products.

Mr Franco Wong from Rhythm Green Ltd as the speaker of this CPD event will share his knowledge and experience about CCFL to our members.

Language Cantonese supplemented by English

Fee HK\$120 for member; HK\$150 for non-member

Deadline 20 April 2012

Priority YSG Member; First-come-first-served

CPD/QSD/2012031

Use of BIM in Construction Company



Speaker Mr Welie Ng, BIM Manager of Gammon Construction Ltd.

Date & Venue 7:00 pm – 8:30 pm Wednesday 2 May 2012
Surveyors Learning Centre, Suite 811, 8/F., Jardine House, Central, Hong Kong

Details Mr Welie Ng has been practising in the construction industry for more than 13 years. He practised as an architect after graduating from his master studies, and researched and pioneered the use of 3D related technologies during the same time. He joined Gammon in 2006 where he found the arena was most challenging and diversified for Building Information Modelling (BIM) application in the industry. Up till 2011, Welie and Gammon had gained experience in implementing BIM for more than 10 major construction projects, including One Island East, iSquare and HK Airport North Satellite Concourse, etc.

Application of BIM by construction company could help to improve design coordination and work planning resulting in reduction of construction time and cost. The technology would enable the project team to rehearse the construction process with a clash detection report to identify potential clashes between different trades (structure, architectural finishes and E&M works) prior to construction and would help to minimize abortive work and waste. Welie would share his experience in application of BIM on his projects.

| | | | |
|-----------------|---------------|-----------------|--|
| Language | English | Fee | HK\$120 for member; HK\$150 for non-member (HK\$20 walk-in surcharge for all pricings listed); Free of charge for full time university student (subject to availability) |
| Deadline | 18 April 2012 | Priority | QSD Member: First-come-first-served |

CPD/QSD/2012032

Waste Management and Recycling : Visit to EcoPark and its Tenants



Speaker Representatives from EcoPark, YOT EcoPark Plastic Resources Recycling Centre, St. James' Settlement "WEEE GO GREEN" and Champway Technology Ltd.

Date & Venue 9:00am – 1:00pm Saturday 5 May 2012 EcoPark, Lung Mun Road, Tuen Mun, New Territories

Details Itinerary :
9:00am – Gathering at Kowloon Tong MTR Station (at Junction of Kent Road and Somerset Road)
1:00pm – Dismiss at Kowloon Tong MTR Station (at Junction of Kent Road and Somerset Road)
(Successful registration will receive details of the visit.)

EcoPark, one of the waste management facilities of the Environmental Protection Department, is located in Lung Mun Road, Tuen Mun with a site area of 20 ha. It is developed in two phases and provides a total of 14 ha of land for occupation by the recycling industry. <http://www.ecopark.com.hk/files/ecopark/EcoPark-leaflet.pdf>The EcoPark provides affordable and long term land for use by the recycling and environmental industry to encourage investment in advanced and cost-effective technologies.

The programme of this visit will include visiting the visitor centre of EcoPark and three of its tenants: YOT EcoPark Plastic Resources Recycling Centre - recycling of waste plastics; St. James' Settlement "WEEE GO GREEN" - processing of waste electrical appliances; and Champway Technology Ltd. - recycling of waste cooking oil, restaurant waste (oil, grease trap) to biodiesel.

| | | | |
|-----------------|---------------|-----------------|--|
| Language | Cantonese | Fee | HK\$200 for member; HK\$250 for non-member (including transportation and insurance) |
| Deadline | 21 April 2012 | Priority | QSD member; First-come-first-served (with maximum quota of 40) |

CPD/QSD/2012042

Can Quantity Surveyors become good Project Managers?



| | | | |
|-------------------------|--|-----------------|--|
| Speaker | Mr Kenneth Poon, FRICS, FHKIS, RCE (PRC), Managing Director of Davis Langdon & Seah China Limited | | |
| | He is a pioneer in China's quantity surveying practice. He started working on projects in China in 1985, and participated in the change from planned economy to market economy in the PRC built environment. | | |
| Date & Venue | 7:00 pm – 8:30 pm Wednesday 9 May 2012 Surveyors Learning Centre, Suite 811, 8/F., Jardine House, Central, Hong Kong | | |
| Details | <p>In UK, many quantity surveying firms have branched out into project management services. A close look would reveal that their project management team consists primarily of architects, engineers, building surveyors and professionals of many backgrounds in addition to their quantity surveying staff.</p> <p>So can quantity surveyors become good Project Managers by themselves? The speaker is the Managing Director of DLS Management, the project management arm of Davis Langdon & Seah, which has carried out project management services for numerous projects in China and Hong Kong. He will share with you his experience in this new professional field.</p> | | |
| Language | English | Fee | HK\$120 for member; HK\$150 for non-member (HK\$20 walk-in surcharge for all pricings listed); Free of charge for full time university student (subject to availability) |
| Deadline | 9 May 2012 | Priority | QSD Member: First-come-first-served |

CPD/HKIS/2012036

Sharing Session on "Energizing Kowloon East"



| | | | |
|-------------------------|--|-----------------|-------------------------|
| Speaker | Mr K.K. Ling, Head of Pre-KEDO | | |
| Date & Venue | 7:00pm – 8:30pm Thursday 10 May 2012 Surveyors Learning Centre, Suite 811, 8/F., Jardine House, Central, Hong Kong | | |
| Details | <p>Kowloon East has served as an industry base witnessing the rapid development of Hong Kong in the old days. Following the relocation of the Airport to Chek Lap Kok and the massive relocation of manufacturing base to the Mainland, there has left a huge stock of industrial buildings not being fully utilised. Some private developers, with good market sense, took the first-mover initiatives to develop high grade office buildings and retail centres in Kowloon East. About 1.4 million square metres of office space has been completed.</p> <p>To take advantage of this opportunity, the Chief Executive announced in the 2011-12 Policy Address that the Government will adopt a visionary, coordinated and integrated approach to expedite the transformation of Kowloon East into an alternative and attractive Central Business District. Overwhelming support has been received to the initiative on Energizing Kowloon East from the community since the announcement of the Policy Address. The general feedback from stakeholders is that the Government should execute this blueprint with determination, speed and extensive public engagement.</p> <p>For early implementation of this initiative, a new Energizing Kowloon East Office (EKEO) will be created under the Works Branch of Development Bureau to steer, supervise and monitor the development of Kowloon East, so as to expedite its transformation to a new Central Business District.</p> | | |
| Language | English | Fee | HK\$50 for member |
| Deadline | 27 April 2012 | Priority | First-come-first-served |

CPD/GPD/2012026

Enhancing Sales with Marketing

| | | | |
|-------------------------|---|-----------------|--|
| Speaker | Mr Tony Tse Wai Chuen, Founder and Director of Brand Star Limited, a property development consultancy firm | | |
| | Mr Tse Wai Chuen Tony, a general practice surveyor and past president of the Hong Kong Institute of Surveyors, with over 35 years' experience in real estate business. Mr Tse had been the general manager of the Sales Department of a major listed development company for over four years and was involved in the sales of a number of major development projects. | | |
| Date & Venue | 7:00 pm – 8:30 pm Thursday 17 May 2012 Surveyors Learning Centre, Suite 811, 8/F., Jardine House, Central, Hong Kong | | |
| Details | The speaker would like to share his experience in how a well planned marketing could enhance sales of residential property; and also the likely implications on marketing as a result of the proposed legislation on regulating the sales of first hand residential property. | | |
| Language | Cantonese | Fee | HK\$120 for member; HK\$150 for non-member HK\$30 walk in surcharge for all pricings listed |
| Deadline | 3 May 2012 | Priority | GPD Member; First-come-first-served |

CPD/YSG/2012033

From A GP Surveyor becoming a Project Manager



| | | | |
|-------------------------|---|-----------------|--|
| Speaker | Mr MY Wan, FRICS, FHKIS, RPS(GP), BBS, JP. Honorary Secretary of the Hong Kong Federation of Youth Groups & the Honorary President of Youth Outreach | | |
| Date & Venue | 7:00pm – 9:00pm Monday 21 May 2012 Surveyors Learning Centre, Suite 811, 8/F., Jardine House, Central, Hong Kong | | |
| Details | In January, MY Wan shared with the young surveyors of the Lands Department on how, with his training as a general practice surveyor, he later assumes the functions of a project manager. The talk traces the various cases/projects he executed or brought about before and after the transformation, over a 40 year span. Whilst giving the talk in January, he thought he could enhance the delivery of the message by slightly rearranging the sequence and enriching the illustrations. Cases illustrated are many, varied and include the resumption of land for the Aberdeen Tunnel, and the development of IFC. He hopes young surveyors will be encouraged to broaden their scope. | | |
| Language | Cantonese with English supplement | Fee | HK\$120 for member; HK\$150 for non-member HK\$20 walk-in surcharge for all pricings listed |
| Deadline | 7 May 2012 | Priority | YSG Member; First-come-first-served |

CPD/YSG/2012034

New Business Hubs & Revitalizing Industrial Properties



| | | | |
|-------------------------|---|-----------------|--|
| Speakers | Mr James Siu, Savills (Hong Kong) Limited Mr Raymond Pun, Savills (Hong Kong) Limited | | |
| Date & Venue | 7:00pm – 8:30pm Tuesday 29 May 2012 Surveyors Learning Centre, Suite 811, 8/F., Jardine House, Central, Hong Kong | | |
| Details | <p>Traditional industrial areas have been evolving as new business hubs. Revitalization of industrial buildings is not only a market movement, but also brings solutions for safety use of premises and unifies mixed users in industrial blocks. Under the policy of revitalizing industrial properties, qualified buildings may capture the incentive of nil waiver fee through wholesale conversion.</p> <p>Being an active player in industrial market for over two decades, Mr James Siu is the Head of the Kowloon office of Savills (Hong Kong) Limited. He specializes in major industrial investment deals and concluded the transaction of Tsuen Wan Development Site in HK\$875M in late 2010, which is the largest industrial site transaction in Hong Kong. Mr Raymond Pun is experienced in asset management and enhancement. He advises investors to grasp this treasure opportunity and concluded whole block investment transactions in Kowloon East and Kwai Chung.</p> <p>James and Raymond will share their market intelligence with members and analyze industrial investment market under the light of revitalization policy. The sharing will be illustrated by practical case studies. The speakers will also share their successful experience in dealing with strata-title ownership, which is well recognized as a hurdle of revitalization.</p> | | |
| Language | Cantonese | Fee | HK\$120 for member; HK\$150 for non-member HK\$20 walk-in surcharge for all pricings listed |
| Deadline | 7 May 2012 | Priority | YSG Member; First-come-first-served |

PQSL/QSD/2012030

QSD APC Workshops 2012



| | | | |
|-------------------------|---|-----------------|--|
| Speaker | Experienced Assessors of QSD APC | | |
| Date & Venue | 2:00 pm – 6:00 pm Saturday 9 June 2012 or 16 June 2012 Surveyors Learning Centre, Suite 811, 8/F., Jardine House, Central, Hong Kong | | |
| Details | <p>The workshop aims to assist candidates to have a better understanding of the requirements and techniques in solving the written practical problems of the APC using critical and analytical thinking. It also aims to provide a forum for candidates to know more about the assessor's expectation in assessing candidates' practical experience and professional competence achieved through the written assessment, diary & logbook and PQSL. The workshop will focus on discussing the ways in identifying the key issues in different types of questions and on expected answers from previous papers, and the focus on the diary & logbook and PQSL. Discussions will be held in small groups, each headed by an experienced assessor. Interaction is expected between assessors and candidates. Topics will include both pre- and post contract issues.</p> <p>With the implementation of the new APC system in July 2011, a general introduction of the QSD Part I and Part II assessment will be provided. Candidates are encouraged to attend the session to get familiarized with the new Part I and Part II assessment.</p> | | |
| Remark | Candidate should attend the workshop either on 9 June 2012 or 16 June 2012. | | |
| Language | Cantonese with English supplement | Fee | HK\$100 per person (additional charge of HK\$20 for walk-in) |
| Deadline | One week before the event | Priority | QSD Probationers & Students |

CPD/GPD/2012019

Slope Hazards and their Mitigations in Hong Kong

| | | | |
|-------------------------|---|-----------------|---|
| Speaker | Dr C K Lau | | |
| | Dr Lau is a Director of Fong On Construction Limited and James Lau & Associates Limited. He obtained his PhD in Soil Mechanics from Cambridge University. | | |
| | He is the Founder Chairman of AGS(HK), a Past Chairman of HKIE Geotechnical Division, an Adjunct Professor of HKCityU and an Honorary Fellow of HKUST. He is also an AP(List of Engineers), RSE and RGE. | | |
| | Dr Lau has co-authored a Technical Text Book on Slope Stabilization and published technical papers in Geotechnique, Canadian Geotechnical Journal and HKIE Transactions etc. | | |
| Date & Venue | 7:00 pm – 8:30 pm Wednesday 13 June 2012 Surveyors Learning Centre, Suite 811, 8/F., Jardine House, Central, Hong Kong | | |
| Details | The man-made slope and natural terrain hazards are first reviewed. The strengthening of the sub-standard man-made slopes as well as the mitigation measures for rockfall and debris flow events are then introduced. Finally, the steps taken by government in reducing the hazard risks for both existing and new development projects are discussed. Some of the issues related to Buildings Department's Dangerous Hillside Orders and routine maintenance of slopes will also be addressed. | | |
| Language | Cantonese with English supplement | Fee | HK\$120 for member; HK\$150 for non-member |
| Deadline | 30 May 2012 | Priority | HK\$30 walk-in surcharge for all pricings listed GPD Member: First-come-first-served |

CPD/GPD/2012040

Housing for the Elderly in Hong Kong



| | | | |
|-------------------------|---|-----------------|---|
| Speaker | Professor Francis Wong | | |
| Date & Venue | 7:00pm – 8:30pm Thursday 5 July 2012 Surveyors Learning Centre, Suite 811, 8/F., Jardine House, Central, Hong Kong | | |
| Details | <p>Ir Professor Francis Wong is a Professor in the Department of Building and Real Estate (BRE) as well as the Director of the Research Centre for Construction and Real Estate Economics (RCCREE) of the Hong Kong Polytechnic University. He was the Head of BRE from academic year 2005/6 to 2007/08. He has 30 years of academic and practical experiences, and has published more than a hundred and sixty papers in including journal articles, conference papers, professional journals, research monographs, and consultancy reports. His main research interests include affordable housing development, and construction safety.</p> <p>There is a growing ageing population in Hong Kong. In year 2000, 17.1% of our population was 60 years old or over. However, it is estimated that 31% of the population will be over 60 years of age in year 2036. The objectives of this seminar are to compare the housing provision for the elderly in Hong Kong with other developed countries, and to examine the factors affecting the housing affordability and preferences of the elderly. The Reverse Mortgage Programme offered by the Hong Kong Mortgage Corporation (HKMC) and the two Housing Programmes for the elderly offered by the Hong Kong Housing Society (HKHS) in Tin Shui Wai and North Point will be discussed.</p> | | |
| Language | English | Fee | HK\$120 for member; HK\$150 for non-member |
| Deadline | 21 June 2012 | Priority | HK\$30 walk-in surcharge for all pricings listed GPD Member; First-come-first-served |

Coffee Class & BS News Discussion

CPD/BSD/2012041

Speakers for Coffee Class Coffee Master from Starbucks Coffee

Date & Venue 7:00pm – 8:30pm Friday 11 May 2012
Starbucks Coffee, Shop on 1/F, Prosperity Tower, 39 Queens Road Central, Central

Details At the beginning of the event, coffee master from Starbucks coffee will deliver to our members a 30 minutes introduction about the legend of the coffee, coffee growing region and characteristic as well as the coffee bean classification. Following the introduction, a Q&A and coffee tasting session would be started. Members would be able to learn the basics about coffee and its rich history and develop a true connoisseur's palate from the start.

After the coffee class, members are not only able to gather at the café to enjoy their coffee but also exchange their views with other members toward the recent news, policies and development about our Building Surveying Profession such as the implementation of Minor Works System, MBIS, etc. in a causal way.

Language Cantonese **Fee** HK\$120 per member
(Including 1 cup of coffee in grande size & 1 piece of dessert)

CPD Hour 1 Hour **Priority** BSD member; First-come-first-served (with maximum class size of 30)

Land Surveying Division Chairman's Message



Koo Tak Ming LSD Council Chairman

New APC Rules and Guide (LSD)

Pursuant to the amendment of the HKIS Constitution and Bye-laws took effect on 18 July 2011, the Assessment of Professional Competence (APC) of the Land Surveying Division (LSD) is to be revised. We have completed the new APC Rules and Guide subject to the endorsement from BOE. Thanks for the effort of the LSD Education Committee (LSDEC) which is chaired by Mr Paul Ng in completing the R&G in great pace. The R&G paves the way for our probationer in taking the Technical Level (Part I) Assessment and the route to membership as shown in the diagram which is prepared by YSG for the Career Expo 2012.

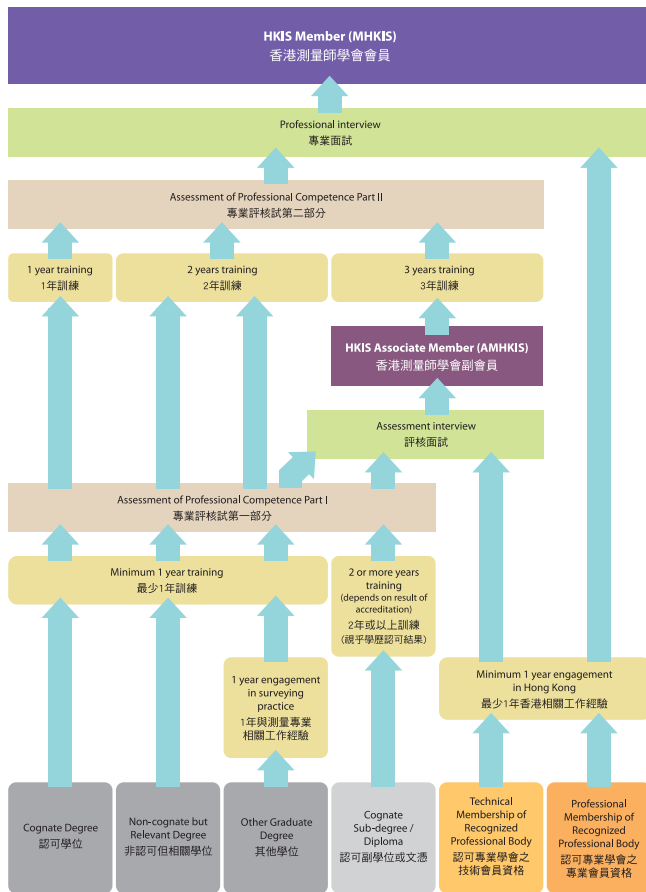
The APC is a training and assessment scheme for those with recognized qualifications to seek for themselves admission to the membership of Associate Member (AMHKIS) or Member (MHKIS) of the Hong Kong Institute of Surveyors (HKIS). The scheme consists of:

- A specified period of technical or professional training;
- A technical level (Part I) written assessment in the form of a question paper;
- A technical level (Part I) assessment interview for admission to the membership of AMHKIS;
- A professional level (Part II) written assessment in the form of a practical task and its written report;
- A professional level (Part II) assessment interview for admission to the membership of MHKIS;

Depending on the membership to be attained, the following submissions by APC candidates to HKIS are necessary:

- Application for entry to APC;
- Notification of change of training profile (if necessary);
- Submission of training records;
- Application for Part I written assessment;
- Application for Part I assessment interview (for admission to AMHKIS);
- Application for Part II written assessment; and
- Application for Part II assessment interview (for admission to MHKIS).

成為會員
Routes to Membership



Route to Membership (prepared by YSG)

Training Period

| Qualification | Training period for Part I Assessment | Training period for Part II Assessment |
|---|--|--|
| Cognate Degree | 1 year | 2 years |
| Non-cognate but Relevant Degree | 1 year (minimum) | 3 years (incl. time for Part I) |
| Other Degrees + 1 year surveying experience | 1 year (minimum) | 3 years (incl. time for Part I) |
| Cognate Sub-degree or Diploma | 2 years or more depending on result of accreditation | 3 years (after obtaining AMHKIS) |

Training experience must be gained in at least one of the following nine specialized fields:

1. Cadastral Surveying
2. Engineering Surveying
3. Topographical Surveying
4. Geodetic Surveying
5. Hydrographic Surveying
6. Photogrammetry and Remote Sensing
7. Mapping and Cartography
8. Geographic Information System
9. Utility Surveying

Technical Level (Part I) Assessment includes a written assessment and an interview. The Part I written assessment will be held twice a year. Candidates may apply for the Part I written assessment as soon as it is available for application. The required completion of minimum training applies to the application for assessment interview only. The Part I assessment interview is for admission to AMHKIS only.

Candidates may choose to apply for it or not depending on their need. Candidates attempting the Part I assessment interview must have passed the Part I written assessment and completed the minimum training required.

Professional Level (Part II) Assessment consists of the Part II written assessment and a professional interview. The Part II written assessment is in the form of a practical task and the written report of it. It is not necessary for a candidate to have completed the Part I written assessment before applying for the Part II written assessment. A candidate attempting the Part II assessment interview must have passed the Part I and Part II written assessments and completed the minimum training required.

The APC R&G will be published on the HKIS website very soon. You may like to contact our Secretary to LSDEC at lsdec@hkis.org.hk for any further information about the new APC and the new R&G.

LSD Contact Points

If you have any views on the Council's work, please feel free to send them to the Honorary Secretary at lsd@hkis.org.hk or

to me at lsdchairman@hkis.org.hk. 

測量精英 不斷提升 Surveying Professionals in Search of Excellence

持續專業發展 Continuing Professional Development

Surveyors Learning Centre, 8/F Jardine House, 1 Connaught Place, Central, Hong Kong
香港中環康樂廣場1號怡和大廈8樓測量師研習中心

For reservation, please call the Secretariat on 2526 3679 or email: slcbooking@hkis.org.hk
歡迎預定設施，請電 2526 3679 或 電郵 slcbooking@hkis.org.hk

Planning & Development Division Chairman's Message



Raymond Chan PDD Council Chairman

Nomination to Land & Development Advisory Committee, Planning Sub Committee

Our past Chairman Mr Edwin Tsang was nominated by HKIS as its representative to serve in the Planning Sub Committee

in the Land & Development Advisory Committee (LDAC) from 1 July 2012 to 30 June 2015.

PDD Annual Conference 2012

Following the success of our PDD Conference 2011, in which our Chief executive-elect Mr CY Leung was a speaker, PDD Council has resolved to organize our Annual Conference again in around November this year. The topic of the

conference is yet to confirm but is expected to be one of the interests to our members. Please look forward to it and support it when it comes. 🇺🇸



FACULTY OF CONSTRUCTION AND ENVIRONMENT
建設及環境學院

Programme Admission for 2012/2013 Postgraduate Scheme in Construction and Environment

- MSc in Sustainable Urban Development
- MSc/ PgD in Construction and Real Estate
- MSc/ PgD in Construction Law and Dispute Resolution
- MSc/ PgD in Project Management
- MSc in Building Services Engineering
- MSc in Facility Management
- MSc/ PgD in Fire and Safety Engineering
- MSc in Civil Engineering
- MSc in Environmental Management and Engineering
- MSc/ PgD in Geomatics (Geographic Information Systems/ Surveying)

Mixed Mode:
Students can study Full-time
or Part-time at their own pace.
Part-time: normally 2.5 years
Full-time: normally 1 year

Enquiry
2766 5029
www.polyu.edu.hk/fce/postgrad-scheme

Online Application
Prospective applicants can obtain application materials and submit application via the Study@PolyU website at www.polyu.edu.hk/study

Property & Facility Management Division Chairman's Message



Dick Kwok PFMD Council Chairman

As you aware the Advisory Committee for the regulation of Property Management Industry is now working in full speed preparing the draft legislation. I have raised our concern of the proposed pre-requisites on academic and professional qualifications for the registration of property management practitioners through our representatives in the committee. While we still hold our view that it is not appropriate to introduce licensing of property management practitioners but if the Committee choose to go ahead with such licensing, then we will recommend a two-tier system i.e. general and professional grade. Another very important aspect is how to clearly delineate the obligations and liabilities of a licensed property management practitioner (licensee), and what kind of penalties will be charged to the licensees of contravening the provisions of the proposed Ordinance and its subsidiary legislation. Our council will make every endeavour to address our concerns regarding the aforementioned issues to the Home Affairs Department (HAD).

We shall be meeting with the concerned officials of HAD to discuss and exchange views on matters related to CEPA, Building Management Ordinance Review and Licensing of Property Management Companies and Practitioners by early April. I shall report the outcomes after the meeting in due course.

We are invited to visit and meet the programme team and students studying Bachelor of Arts in Housing Management by The Hong Kong Polytechnic University, School of Professional Education and Executive Development (SPEED) on 28 March 2012. According to the programme documents, it offers a full-time mode of study with an overarching aim to provide the academic framework that helps future housing professionals to develop and strengthen their basis of knowledge and decision making process. We are glad to have the chance to meet them as we are of the view that their graduates might be our potential intake of associate members of PFM division.

Following the closing of nomination submission for Green Building Award (GBA) 2012, the Organizing Committee are now grouping up the assessors from different professional institutes including HKIS to carry out the initial assessment of over 80 nominations under the following 4 categories:-

- 1) New Building (NB)
- 2) Existing Building (EB)
- 3) Research & Planning (RP)
- 4) Building Products (BP)

Four of our council members including Edmond Cheng, Kays Wong, Dr Lam Kwok Wing and I have joined the HKIS assessors team.

Members may be aware of the HKIS broadcast of the Best Landscape Award for Private Property Development 2012 organized by the Leisure and Cultural Services Department. I urge your full support and participation to this event as we share their objective to sustain the betterment of living environment and to promote excellence in greening by outstanding landscape design and horticultural maintenance. This award is now open for nomination until 23 April 2012.

After the Building Energy Efficiency Ordinance (BEEO) was put into gazette on 3 December 2010, it will come into full operation on 21 September 2012. Under the new BEEO, all newly constructed buildings will be required to comply with the minimum energy efficiency standards and requirements as specified in Building Energy Code (BEC). Existing buildings will be required to comply with BEC only when major retrofitting works are carried out. Commercial buildings and commercial portions of composite buildings will be required to carry out energy audits in accordance with the technical requirements as specified in Energy Audit Code (EAC).

Members' attention is drawn that the energy audit will only apply to central BS installations of commercial buildings and commercial portions of composite buildings. The owner of a building is required to engage a Registered Energy Assessor to conduct energy audit every 10 years. In addition, pursuant to schedule 5 of BEEO, the 1st round of energy audits will be completed in phases within 4 years and the newer the building (by OP date), the earlier the energy audit should be done. Hence, members are strongly recommended to familiarize with the new BEEO and the requirements of EAC and BEC in details. For further information, please visit EMSD website: www.emsd.gov.hk.



Quantity Surveying Division Chairman's Message



Thomas Ho QSD Council Chairman

Tapping the Potential of BIM

Dispute resolution measures have been a hot topic for quite some years that many university undergraduates would like to pursue master programmes in this area. However, Building Information Modelling (BIM) has emerged in the last few years as an even hotter topic around the world. While we would resort to dispute resolution measures when things go wrong, BIM would be with us throughout the development life cycle no matter where one enters into the life cycle, e.g. geospatial information, design, construction, facility management, etc.

BIM softwares and supporting hardwares are still expensive, keeping the low penetration rate of its adoption and low investment in its technical training from architects and engineers. Quantity Surveyors are even lagged behind. If someday the architects and engineers catch up the pace and widely accept BIM as the default system, Quantity Surveyors who do not possess the knowledge about the operation of models to extract information would be very much disadvantaged.

The Divisional Council sees that BIM is an important technology. Its application is a definite trend that we should start to learn and use now in order to gain the best benefit out of it. In regard of this, a new sub-committee the BIM Sub-Committee (initially called "the BIM Measurement Sub-Committee") has been set up this year with preliminary targets to 1) keep members updated on the development and use of BIM, 2) arrange seminars and workshops on

BIM, and 3) arrange visits to organizations to share their experience in BIM. While the Sub-Committee will initially focus on promotion and education, it would move on to focus on how to actually use and tap the greatest potential out of BIM. Proper, effective and efficient adoption of BIM on Quantity Surveying Services would be our ultimate goal. The possibility of expanding the traditional scope of QS Services would also be explored.

The Sub-Committee has already organized 4 "Introductory Hands-on Training Classes on Revit Architecture or MEP" on 20 March 2012 (Tuesday), 23 March 2012 (Friday), 27 March 2012 (Tuesday) and 30 March 2012 (Friday). A total of 40 seats have been fully booked and recorded over-subscription. We would like to express our thanks to Summit Technology (Hong Kong) Limited for their kindness in arranging these classes to our members at their office. Members who failed to attend the classes this time shall not be disappointed, future arrangement would be made to cater your needs, stay tuned to our announcement.

Another CPD event has been arranged on 16 April 2012 with a talk by Ir Francis Leung, Chairman of Hong Kong Institution of Building Information Modelling on BIM Development in Hong Kong and Quantities Take-off from BIM.

I would invite all members to ride on BIM, harness and tap the most out of it.

A Challenging Year for CPD Sub-Committee - CPD Events in 2012: Talks, Workshops, Training Classes and Site Visits

Continuing professional development (CPD) is "the systematic maintenance, improvement and broadening of knowledge and skill and the development of personal qualities necessary for the execution of professional and

technical duties throughout the practitioner's working life."

持續進修 提昇專業水平 鞏固基礎 發揮專長
終生學習 發展全人理想 擴張領域 啟發潛能

In order to assist our members to maintain a high level of competence in professional practice and technical performance, the CPD Sub-Committee would organize CPD events from time to time for members to join.

To cope with the needs and demands of our members, the CPD Sub-Committee has planned to diversify its range of CPD events, in terms of topics and types, and to organize about 40 (which is a sky-high figure) CPD events this year. We would not only organize talks on contractual and legal topics but also on other hot topics, such as Building Information Modelling (BIM) and green measures. We would also organize APC workshops, training classes on BIM and site visits.

In the past, site visits were the most attractive CPD events to members, which would become full house within a few days after broadcasting. Therefore, the CPD Sub-Committee has also planned to organize about 10 site visits (such as computer recycle workshop, Construction Industry Resource Centre, EcoPark, gypsum block wall system factory, curtain wall factory and precast façade factory, etc.) this year.

This year's 1st site visit to a computer recycle workshop was organized on 25 February 2012. As usual, this site visit

received positive responses with full registration within a few days after broadcasting. The Convenor of this event, Mr Joe Wu, has recorded this meaningful event in the Education Section of this month's Surveyors Times, which is the 1st report this year for site visit organized by the CPD Sub-Committee.

In the past 3 months, more than 10 CPD events, including talks, site visit and training classes, have been organized by the CPD Sub-Committee. It is inspiring that nearly all of these CPD events were full house. We have posted nearly 10 more CPD events on this month's Surveyors Times. As planned, we will have some 20 other CPD events (including talks, workshops and site visits) to be announced in the year to come.

This is really a challenging year for the CPD Sub-Committee. Taking this opportunity, I would like to thank the Chairman Mr Paul Wong, the Convenor Ms Kathy Cheung, and other members of the CPD Sub-Committee, for their great effort in organizing so many talks, workshops, training classes and site visits in diversified topics. All members are encouraged to join the coming CPD events. As the seats are limited, you are encouraged to register your interested CPD events as soon as possible after broadcasting.



CPD talk by Ms Ada Fung, JP, Deputy Director of Housing (Development & Construction), Hong Kong Housing Authority on Integrated Procurement : Procuring for Innovations using 3-envelope System



Presentation of Souvenir to Ms Ada Fung, JP

PAQS Congress 2012

The Pacific Association of Quantity Surveyors (PAQS) Congress 2012 will be held in Brunei from 7 to 10 July 2012. The theme of the Congress is "Innovating and Sustaining: Challenges and Opportunities". Details of the Congress are contained in <http://www.paqs2012.com>. It will be an opportunity to keep abreast of the updated development of quantity surveying services in these areas and to look into

ways of overcoming challenges and increasing demands including awareness on the need to expand our capacities to take up the opportunities that will come with all these challenges. Members are encouraged to join this Congress and submit papers.



Registration for PRC Registered Cost Engineers (造價工程師 (香港地區) 初始註冊通知)

Letters have been issued to the QSD Members in mid of March 2012, who attained the qualification of the PRC Registered Cost Engineers (RCE) through HKIS in 2006 and 2011. These members can apply through the Institute for registration under the 建設部辦公廳文件建辦標 [2008]12 號 dated 25 February 2008. The applicants are advised to read carefully and thoroughly this MoHURD memo when preparing their submission. The duly completed, signed

and stamped application form together with all the required documents should be submitted to the Institute on or before 20 April 2012. The application will then be forwarded to the China Engineering Cost Association (中國建設工程造價管理協會) for processing.

The aforementioned MoHURD memo and the application form can be downloaded from HKIS website.

QS Member Mr Benny Lee (李志仁測量師)

Further to my previous messages on the updates of Benny, I would like to inform you that Benny is now recovering well at home. QSD Vice Chairman Mr Keith Yim, BoPD Chairman Mr Ricky Chan and I visited Benny on 17 February 2012. It is encouraging to see that his health condition is good. We hope that he can fully recover soon. Benny would like to

thank all members' concern and help during the difficult time.

Members are encouraged to become registered organ donors. Registration can easily be done on-line. Please visit <http://www.organdonation.gov.hk/eng/knowmore.html> for more details. 🇮🇪



Young Surveyors Group Chairman's Message

Kenny Chan YSG Committee Chairman



The multi-dimensional platform

At YSG, we provide you with numerous opportunities to expand your network. You can meet young surveyors and senior-but-young-at heart surveyors from different divisions by joining our CPDs and social events. We make use of our established links with other local professional organizations to jointly organize various functions. We also actively reach out to different parts of the world by attending international conferences and organizing study tours and short visits. We

connect you across generations, divisions, professions and locations.

Welcome our new co-opted members of YSG Committee 2011/12 - Anthea Cheng (GP), Becky Chan (BS), Hayton Law (BS), Ken Yeung (GP), Kristen Lam (GP) and Victor Li (GP) to join this multi-dimensional platform as endorsed in our monthly meeting held on 2 March 2012. We are waiting for you, too!

Highlights of the month

22 February 2012 – CityU Career Talk

Over 100 potential surveyors from CityU attended the Career Talk for surveying students hosted by The Building & Construction Society of CityUSU. YSG committee members introduced the roles and structure of HKIS, the routes to professional membership under the new APC system, as well as the latest career prospects in different divisions in the talk.

25 February 2012 – CPD – “The Maintenance of the Environment for Wine Production (Factory Visit of The 8th Estate Winery - Hong Kong’s First Winery)”

How can wine produced in a city without growing grape? How can we simulate the weather and environment of a Château in an industrial building? Are there any special licensing requirements? This CPD helps turning these question marks into exclamation marks. We visited an urban winery and its production facilities which are located

in a typical industrial building located in Ap Lei Chau. High quality fresh grapes originated from different continents are shipped to the factory, and then freshly pressed, aged in the oak barrels, and bottled there. We also tasted the “Made in Hong Kong” wine!



Look at the smiles on our faces, you can feel the taste of the local wine production

3 March 2012 – “One Day Seminar on Contract Management” Co-organized by CI Arb, CIBSE, HKIE, HKIS, ICE, and Law Society

We had again a full house of participants filling up the Chiang Chen Studio Theatre of PolyU for this One Day Seminar held on 3 March 2012. I am honored to be the Chairman of the Joint-Institute Organizing Committee for this year’s seminar. I would like to thank our guest speakers for their valuable time and effort. I must not forget the contributions by all OC members and helpers from all 6 young professional groups to make this a successful event.



Special thanks to the hard work of the Organizations Committee and helpers from the 6 organizations



Our guest speakers: Mr K C Tang, Ir David Leung, Mr Justin Wong, Prof Winnie Cheng, Mr James Kwan, Mr Peter Ng and Mr Tom Palmer

Coming Soon

Stanley International Dragon Boat Championship 2012

The flying dragons of HKIS are ready! Our legendary HKIS Dragon Boat Team has already started our series of intensive training every Sunday afternoon in order to prepare for the Championship. Want to be one of our paddlers, drummers, steersmen or cheer-leaders? Please drop us an email at ysg@hkis.org.hk.



Time for playing game with the Sun! Welcome our new paddlers!

“Far from Ordinary: Women of Excellence” Joint CPD series with JCI HK Jayceettes

Co-organised with JCI Hong Kong Jayceettes (香港女青年商會), a Speaker Series under the theme “Far from ordinary: Women of Excellence” (卓越女性系列) is to be held in Saturday afternoons in the coming months. Outstanding business and community leaders are invited to share their valuable experience on what makes an elite leader and how to overcome hurdles of balance of powers along the way. Potential speakers invited include former Secretary for Justice Ms Elise Leung (梁愛詩), GBM, JP; Ms Mariane Chan (陳妙瑛), former TV actress and now founder of renowned local brands of beauty and health products; Ms Akina Fong (方健儀), former TV News Reporter and currently Senior Information Officer at the ICAC, and Ms Lisa Cheng (鄭麗莎), the world champion rock climber known as the “Hong Kong Spider Woman”... etc. Keep an eye on our promotion and be ready to be inspired!

Study Tour 2012

Our Organizing Committee is now short-listing the destination for our upcoming Study Tour. Stay tuned for further announcements.

Contact YSG

We need your ideas, suggestions, support and active participation for our coming events. You may email us at ysg@hkis.org.hk, or join us in our YSG committee meetings which will be usually held in Suite 810, 8/F., Jardine House, 1 Connaught Place, Central on the first Friday of each month, except public holidays (i.e. 13 April, 4 May, 1 June, 6 July, 3 August, 7 September, 5 October and 2 November).

Others Upcoming Events:- CPD/PQSL Events

- “Visit to Epoxy Coating and Waterproofing Materials Factory” on 14 and 21 April 2012
- “Introduction to Cold Cathode Fluorescent Lighting” by Mr John Lau on 27 April 2012
- “From A GP Surveyor becoming a Project Manager” by Mr MY Wan on 21 May 2012
- “New Business Hubs & Revitalizing Industrial Properties” by Mr James Siu and Mr Raymond Pun on 29 May 2012
- “The Site Visit to Lingnan Tiandi at Foshan (佛山嶺南天地)” on 2 July 2012

Social Events

- “Oyster Shucking Class” on 25 March 2012
- “Golf Learning Class” on 14 and 21 April 2012
- “HKIS Dragon Boat Team Training” 11 March 2012 to 17 June 2012, every Sunday afternoon

Please check out the details from HKIS email broadcasts, and our announcements in YSG website and Facebook page. Don't miss it!

Find us on Facebook, give us a LIKE:

<http://www.facebook.com/HKISYSG>





Sustainable Development of Computer Equipment Visit to Computer Recycle Workshop

Joe Wu, QSD Convenor of the event

The QSD of our institute organized an event on 25 February 2012 at Caritas-HK Computer Workshop, Kowloon Bay (<http://www.ccw.org.hk/>). We received great honour to have Mr Lau Lu Keung, Project Manager of Caritas- HK Computer Workshop, to share with us the event on "Sustainable Development of Computer Equipment - Visit to Computer Recycle Workshop". The event received positive responses with full registration before the event date.



The event aimed to introduce our members how sustainable development of computer equipment can be achieved in economic, social and environmental friendly ways.

During the event, Mr Lau emphasized that the workshop is to protect the environment by reducing computer dumping, prolonging the life of computers and their parts and recycling the unserviceable computers and parts properly. Besides, the workshop also offers on-the-job training to unemployed people by recruiting them to collect and refurbish computers.



Mr Lau also highlighted that the workshop helps the deprived group to overcome digital divide through providing low-priced or free refurbished computer sets, to the needy, the schools and charity organizations. In addition, the workshop provides training and supports to the low-income parents and makes the best use of refurbished computers.



How to become a World City: Lesson from London

Leo Ho, GPD CPD Helper

Hong Kong is one of the world cities with New York and London, it is whether we can gain upon London or New York in the coming future, a seminar titled "How to become a World City: Lesson from London" was successfully conducted by Mr Franklin Lam on 29 February 2012. Mr Lam, a Senior Portfolio Manager with UBS Global Asset Management in Hong Kong. In 2011, he established "HK Golden 50", which is a non-profit making organization that aimed at improving the state of Hong Kong. In the seminar, he shared an extensive statistical analysis to demonstrate Hong Kong's potential to be a world city. Based on his study, he concluded that there is a possibility for Hong Kong to overtake the position of London as a world city in the next 5 years. With

the support of this set of information, GP Surveyors may hold a more positive view towards our profession as well as the prospect of the city. The attendees were all benefited from Mr Lam's research and study. 🇬🇧





Sports and Recreation Committee Chairman's Message



Lesly Lam Chairman

HKIS Soccer Team – We are the final champion in the Joint Professional League

Team Captains: Mr Cyrus Siu/ Mr Lesly Lam

We are the Champion, my Friends!

The Joint Professional Soccer League was just finished. With the excellent performance and teamwork, we became the champion among 7 teams including HKICPA, HKIA, HKBA, HKDA, HKMA, LawSoc and HKIS after the completion of the double round-robin tournament. All HKIS players in our team have worked very hard for the final championship. Well Done! A full report with photos will be published in the next issue.



HKIS Dragon Boat Team – Hong Kong Championships 2012

Team Captains: Mr Ryan Wong/ Mr William Lai/ Young Surveyors Group

Team Captains: Under the cold weather warning, HKIS Dragon Boat Team started its training on 11 March 2012 at Stanley Beach with the temperature of 10oC. The team captains would like to recruit more members, who are interested in paddling and water sports. Practices will be conducted every Sunday from 12:00 noon at Stanley Beach.

“Teamwork makes the dream works.”

Act now by contacting Donna Yu at cpd@hkis.org.hk or 2526 3679. We are looking forward to seeing you all on the boat!



HKIS Basketball Team – Joint Professional Basketball Tournament Begins!

Team Captains: Mr Arthur Cheung/ Mr Jerry Li / Mr Simon Wong

The Joint Professional Basketball Tournament 2012 has just begun. It is a league and with play-off games. Our professional coach has been guiding us to get stronger. The team keeps practicing for months to improve the skills and teamwork. Keep it up for better results this year.





HKIS Running Team in the Kyoto Marathon 2012 – Superb Results!

Team Captains: Mr Lesly Lam / Miss Kathy Cheung

Members of HKIS running team entered the world competition. SK Pang and Frankie Fan recently joined the Kyoto Marathon on 11 March 2012. The date also marked the one year anniversary of the tragic Great Tohoku Earthquake and Tsunami. The event's objective was to raise funds for the reconstruction of the affected areas as well as revitalization of Kyoto and Japan.

The marathon started from the Nishikyogoku Sport Park and finished in front of the Heian Shrine. They enjoyed this joyful race with beautiful scenery such as Kamo River and several World Heritage temples along the route. Mr Frankie Fan did fairly well in the Kyoto Marathon and he was just a few minutes more than his goal to finish the marathon within 3 hours.

One week later on 19 March 2012, SK Pang completed another marathon - the Dong A Ilbo Seoul Marathon

2012. We are proud to have this "superman" in the HKIS running team.

For the results in the Standard Chartered Marathon 2012, they are still being consolidated and will be announced in the next issue of Surveyors Times.



HKIS Dart Team – Recruitment of players

Team Captains: Mr Jason Chan / Miss Sylvia Leung

The HKIS Dart Team is newly-formed. The team captains would like to recruit ladies and gentlemen in the HKIS to participate in the Joint Professional Dart Competition.

Act now by contacting Donna Yu at cpd@hkis.org.hk or 2526 3679.



Ski and Snowboard Interest Group – Ski and Snowboarding Trip in Summer to New Zealand

Group Convenor: Mr Lesly Lam

The group convenor is now devising a ski and snowboarding trip to the south island of New Zealand in this Summer for the group. Please stay tuned and you will have a chance to visit the mountain of "Lord of the Rings".



HKIS Golf Team – 8th Joint Professional Golf Tournament

Team Captain: Mr TT CHEUNG / HKIS Golf Society

The HKIS golf team joined the 8th Joint Professional Golf Tournament on 28 March 2012 held in Kau Sai Chau Golf Course. Historically, the team won the 1st runner-up last

year. The team captain – Mr TT Cheung will share the details with you in the next issue of Surveyors Times. ■

Recruitment of players is always opened for all qualified members, probationers and student members. Look forward to seeing you.

MSc/PgD in Construction Law and Dispute Resolution

Programme Code : 04001 (Mixed-mode Programme)

Stream Code : LFM for MSc (Full-time) ; LFP for PgD (Full-time) ;

LPM for MSc (Part-time) ; LPP for PgD (Part-time)

Features

- Mixed mode gives students a choice of enrolling full-time or part-time
- Offered by the Faculty of Construction and Environment
- Supported by visiting practitioners, including Lawyers, Arbitrators, Mediators, experts from China & senior construction professionals *
- Some of our subjects are approved for Continuing Education Fund



Programme Aims

- Integrate the necessary knowledge in construction management and law for the needs of construction professionals
- Cut through discipline barriers by integrating the various skills and strengths of the different professions to produce a specialized contribution to the construction industry
- Apply theory to practice by providing training on key dispute resolution skills offered by approved trainers leading to accredited mediator qualification
- Attract construction graduates and lawyers who wish to specialize in construction law and alternative dispute resolution

* Scholarship from Industry :

A scholarship is provided by Davis Langdon & Seah to recognize the student who scores the highest mark in the subject Construction Law.

Entry Requirements

- Bachelor's degree in a construction-related discipline or equivalent (including recognized professional qualifications) plus relevant work experience (preferably at least 2 years) ; or
- Qualified lawyer

Professional Recognition

- The PgD/MSc programme has full accreditation for membership (AHKI Arb) from the Hong Kong Institute of Arbitrators
- Those students who opt to complete the mediation workshop of the programme will be exempted by various professional institutions in Hong Kong and overseas as achievement of approved mediation course leading to membership
- The MSc programme is accredited by the Royal Institution of Chartered Surveyors (RICS) as meeting their academic requirements

Programme Structure

Information related to the programme structure is available from the website (http://www.bre.polyu.edu.hk/frameset/frameset_course.html) or from the Programme Leader, Prof. Edwin H. W. CHAN (tel: 27665800, email: bsedchan@inet.polyu.edu.hk).

Enquiries and Application

Online application website :
<http://www.polyu.edu.hk/study>
Enquiry Tel.: 3400 3819
(Connie Yap, Dept. of BRE) or 2333 0600
(Academic Secretariat)

Application deadline : 30 June 2012